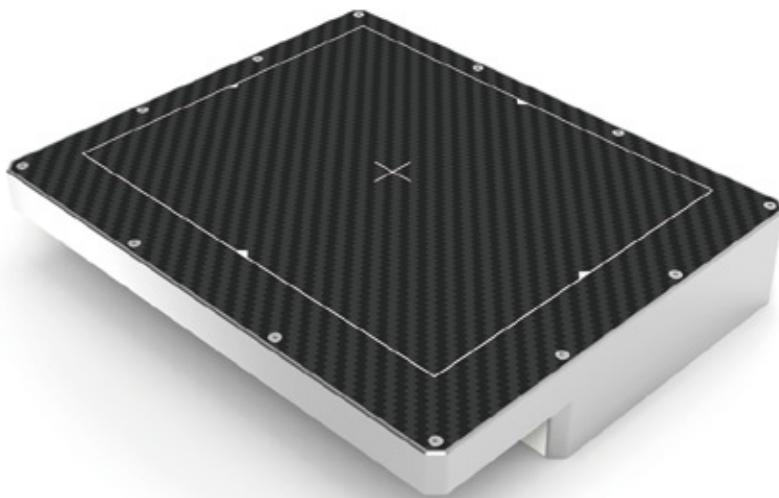


X-Panel 1613a FDM



a-Si X-ray flat panel detector



Key Features

- 125 μm pixel pitch
- Excellent sensitivity and high dynamic range modes
- ROI area scan function can replace the linear array detector
- CSI scintillator offers lower dose and high image quality

X-Panel 1613a FDM is a 16 x 13cm fixed type and low noise X-ray flat panel detector based on a-Si technology that features excellent sensitivity and high dynamic range modes among other benefits. X-Panel 1613a FDM has good image quality and a large dynamic range. It is an optimal solution for dental CBCT application .



Technical Specifications

Technology	
Sensor	a-Si
Scintillator	CsI / GOS
Active Area	160 x 128 mm
Pixel Matrix	1024 x 1248
Pixel Pitch	125 μ m
AD Conversion	16 bits
Interface	
Data Interface	Gigabit Ethernet
Exposure Control	Pulse Sync In / Pulse Sync Out
Frame Speed	30fps(1x1)
Operating System	Windows7 / Windows10 OS 32 bits or 64 bits
Technical Performance	
Resolution	4.0 lp/mm
Energy Range	40~160KV
Lag	0.8% @ 1st frame
Dynamic Range	\geq 86 dB
Sensitivity	460 lsb/uGy
SNR	48 dB @ (20000lsb)
MTF	75% @ (1 lp/mm) 46% @ (2 lp/mm) 27% @ (3 lp/mm)
DQE (2uGy)	64% @ (0 lp/mm) 43% @ (1 lp/mm) 30% @ (2 lp/mm)
Mechanical	
Dimension(H x W x D)	196 x 162 x 37.5 mm
Weight	1.2 kg
Sensor Protection Material	Carbon Fiber
Housing Material	Aluminum Alloy
Environmental	
Temperature Range	10~35°C (operating) ; -10~50°C (storage)
Humidity	30~70% RH (non-condensing)
Vibration	IEC 60068-2-6 Operation: 0.7G, 10-150Hz
Shock	IEC 60068-2-27 Operation: 2G, duration 11ms
Dust and Water Resistant	IPX0
Power	
Supply	100~240 VAC
Frequency	50/60 Hz
Consumption	10.5 W

